

PROCUREMENT COMMITTEE

Clifford J. Hurgin Municipal Center

1 School Street, Bethel, CT 06801 (203) 794-8514

REQUEST FOR QUALIFICATIONS AND PROPOSALS FOR DURANT AVENUE & WOOSTER STREET SIDEWALK IMPROVEMENTS: #2024-005

Addendum #2

January 26, 2024

What are the specifications for the 42" high handrail indicated in the plans on Drawing Sheet C-6?

"As the handrail is not mentioned in the Specifications provided in the bid package, please provide the following: We request that bidders provide a proposed design/specification for a metal handrail securely bolted to a poured concrete foundation, with the handrail at least 42 inches high and the foundation a minimum of an 8-inch-thick pour.

For reference, the specification should be in accordance with Section 9.14, Metal Handrail, of CTDOT FORM 818, *Standard Specifications for Roads, Bridges, Facilities and Incidental Construction* (latest version). Preferably, we are looking for something equivalent to this 44-inch-high handrail, **shown in the sketch and photo on page 2 of this addendum.**

However, the Town will consider other handrail designs and materials proposed by bidders, based on whether they are deemed to be equivalent (based on such factors as ADA compliance, structural integrity, etc.).

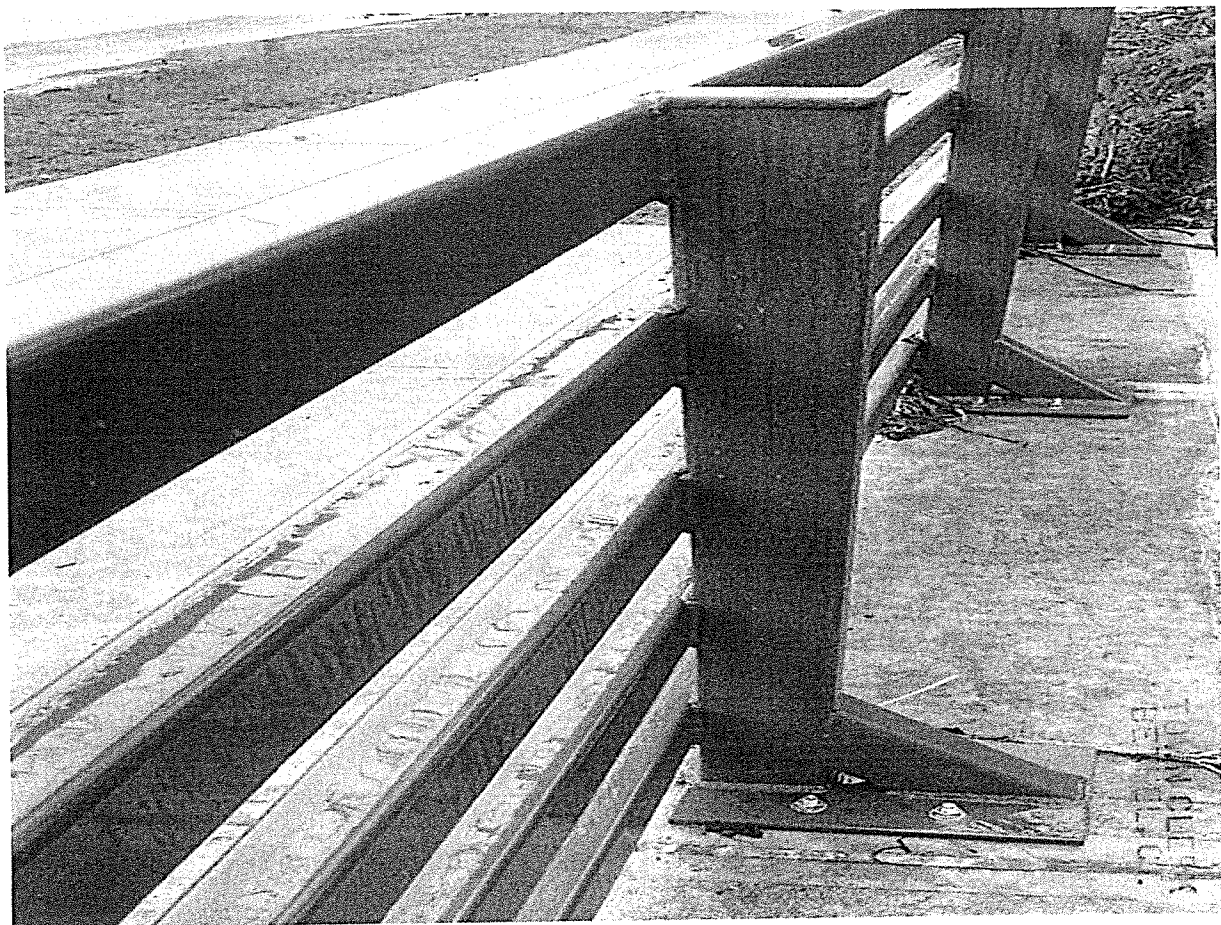
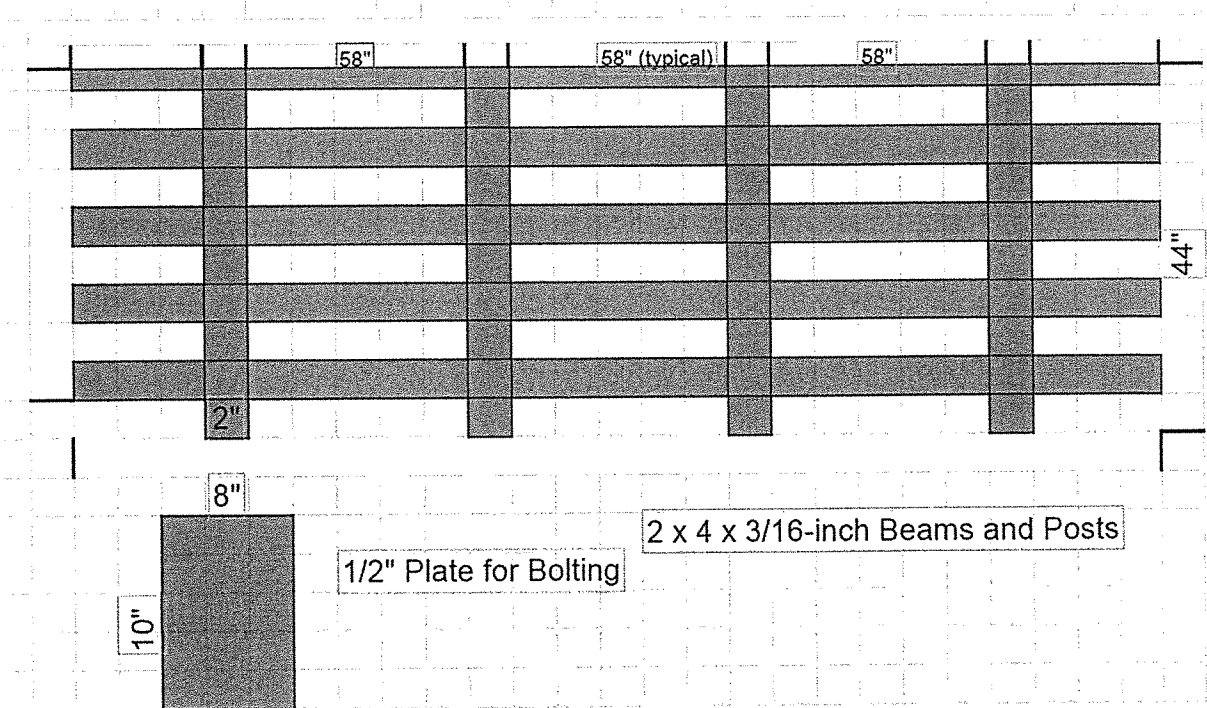
We request that bidders provide a separate cost for the rail and foundation by writing it in on the Bid Price Worksheet provided in the RFP. Unit cost should be shown in units of cost per linear feet. Length to be determined in the field, subject to approval by the Town.

The Town reserves the right to remove these items from the Contractor's scope of work at the discretion of the Town Engineer. The Town reserves the right to perform this work using in-house labor and materials."

TOWN CLERK
BETHEL, CT.

2024 JAN 26 A 8:33

RECEIVED



2024 JAN 26 A 8:33

RECEIVED